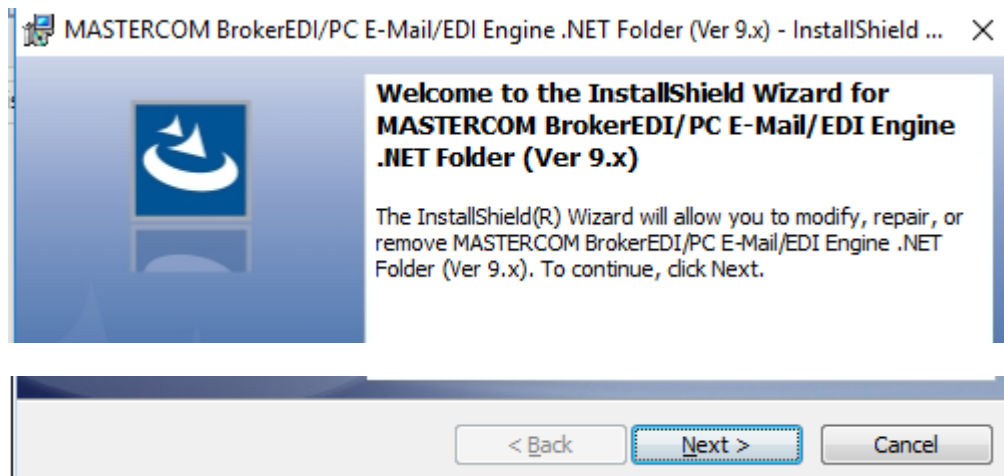


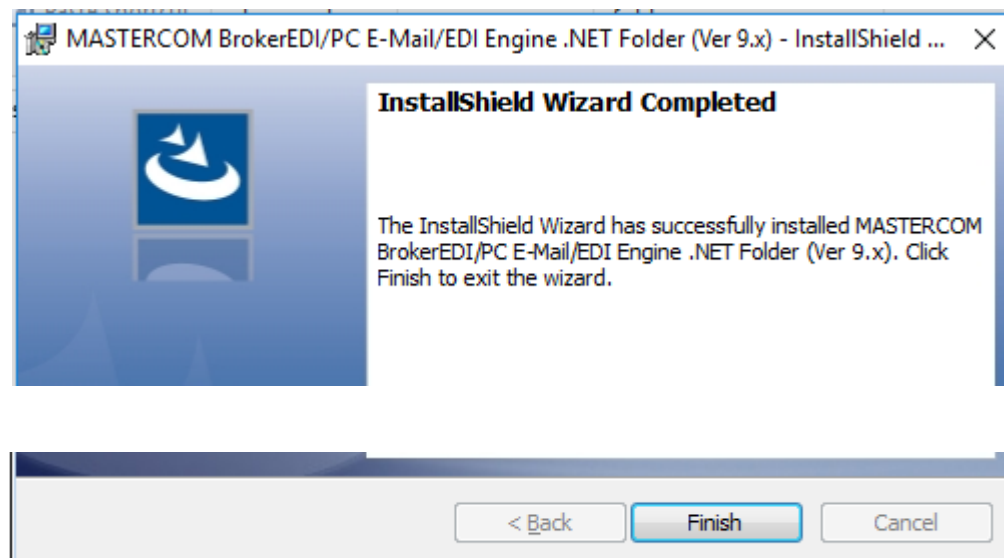
Setting Up Other PC's to do the Upload/Download Communications

To setup another PC in the office to do the upload/download communications, explore to the \EMAIL folder and run **setuppc.exe**.

- 1) At a PC explore to the \EMAIL directory and double-click **Setuppc.exe** to start the installation, as shown below. Setuppc.exe installs the same shortcuts, as shown below, to programs in the \EMAIL folder on the server.

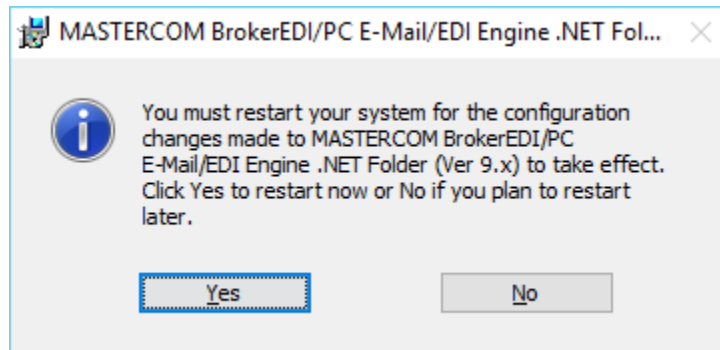


Click the **Next >** button to continue.



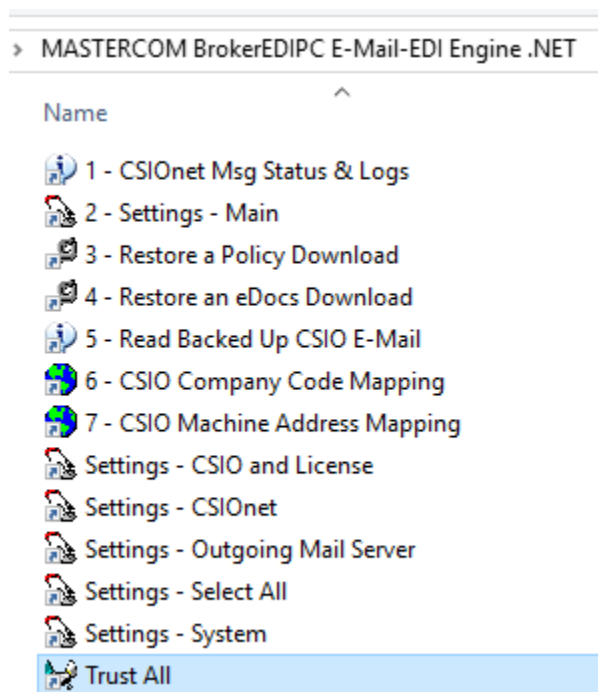
- 2) Click the **Finish** button to finish the installation and you will then be prompted to restart the computer.

HD0020 Setting up a Secondary Computer



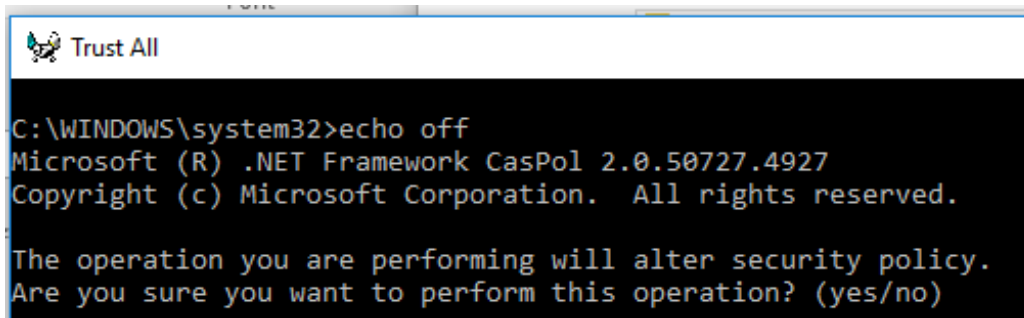
3) Click the “**Yes**” button to restart.

Check that the following “**MASTERCOM BrokerEDIPC E-Mail-EDI Engine .NET**” program folder has been added to your list of programs.



4) In the ““**MASTERCOM BrokerEDIPC E-Mail-EDI Engine .NET**”” program folder, shown above, right click the “**Trust All** “ program-item and “**Run as administrator**”.

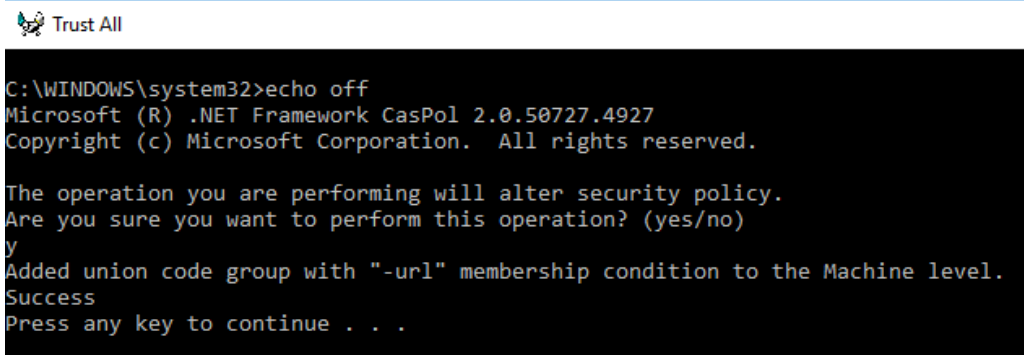
HD0020 Setting up a Secondary Computer



```
C:\WINDOWS\system32>echo off
Microsoft (R) .NET Framework CasPol 2.0.50727.4927
Copyright (c) Microsoft Corporation. All rights reserved.

The operation you are performing will alter security policy.
Are you sure you want to perform this operation? (yes/no)
```

When prompted type “Y <Enter>”



```
C:\WINDOWS\system32>echo off
Microsoft (R) .NET Framework CasPol 2.0.50727.4927
Copyright (c) Microsoft Corporation. All rights reserved.

The operation you are performing will alter security policy.
Are you sure you want to perform this operation? (yes/no)
y
Added union code group with "-url" membership condition to the Machine level.
Success
Press any key to continue . . .
```

Press any key to finish