

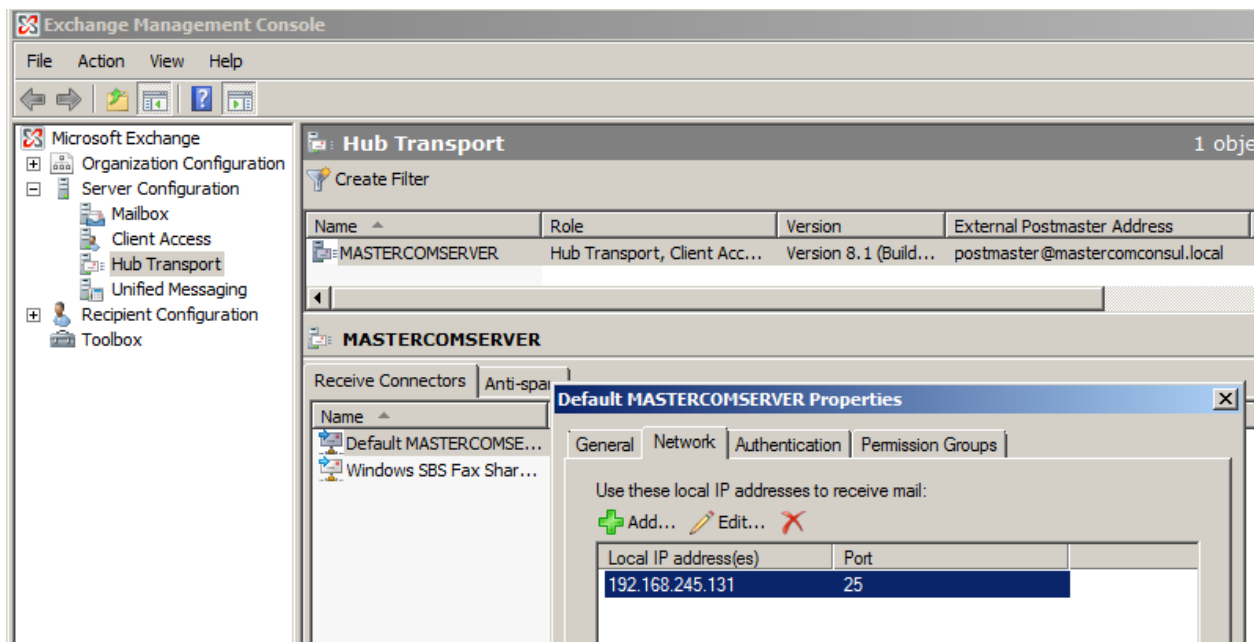
HD0017 - Microsoft Exchange Errors

Microsoft Exchange errors can be:

- Connection to port 25 failed
- 530 5.7.1 Client was not authenticated
- 550 5.7.1 Message rejected as spam by Content Filtering.

Connection to port 25 failed Error

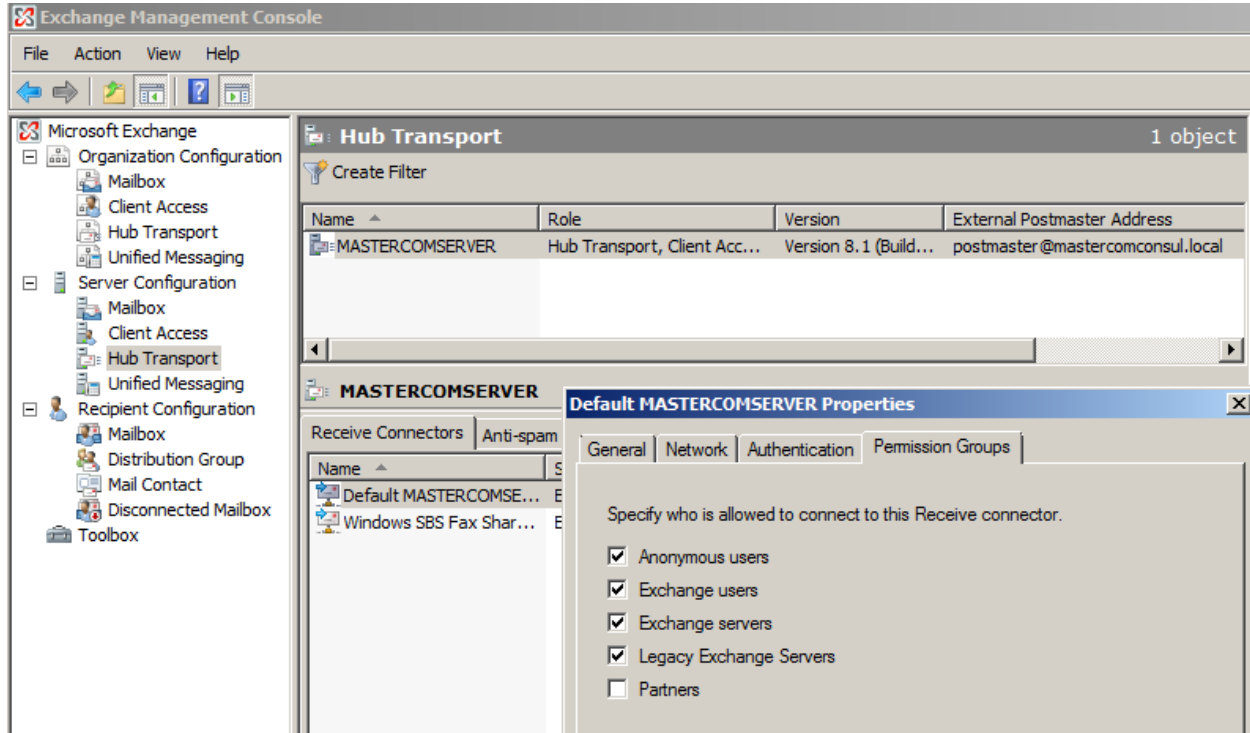
Action: As shown below, open the Exchange Management Console, under your Server configuration, click **Hub Transport**, under the **Receive Connectors** tab, click the Default connector to display its properties, click on the **Network** tab and specify a local IP address. Click **Apply** and **OK**.



530 5.7.1 Client was not authenticated Error

Action: As shown below, to quickly fix this problem, open the Exchange Management Console, under your Server configuration, click **Hub Transport**, under the **Receive Connectors** tab, click the Default connector to display its properties, click on the **Permission Groups** tab and place check mark into **Anonymous users**. Click **Apply** and **OK**.

HD0017 - Microsoft Exchange Errors



550 5.7.1 Message rejected as spam by Content Filtering Error

Action: As shown below, to quickly fix this problem, open the Exchange Management Console, under your Server configuration, click **Hub Transport**, under the **Anti-spam** tab, click the **IP Allow List** to display its properties, click on the **Allowed Addresses** tab and add the IP address of the PC hosting the BrokerEDI Gateway. Click **Apply** and **OK**.

HD0017 - Microsoft Exchange Errors

