

Fast Install Steps

Run **setup.exe** on a Workstation to install the engine software in an \EMAIL folder on the Power Broker mapped drive. A “**MASTERCOM BrokerEDIPC E-Mail-EDI Engine .NET**” program folder will be created on the workstation.

Note: If you wish to enable another PC in the office to do the upload/download communications Explore to the \MAIL folder on the Power Broker mapped drive and run **setuppc.exe** to install the “**MASTERCOM BrokerEDIPC E-Mail-EDI Engine .NET**” program folder on that Workstation. See instructions on page 7.

Install Steps

- 1) Go to the user’s Workstation that will run the upload/download communications.
- 2) Download **setup.exe** from MASTERCOM’s web site and save it in your **\Downloads** folder so you can unblock it. To unblock, right-click it and on the General Tab click the **Unblock** and **Apply** buttons. This should help in avoiding “Open File – Security Warning”s when programs are executed.

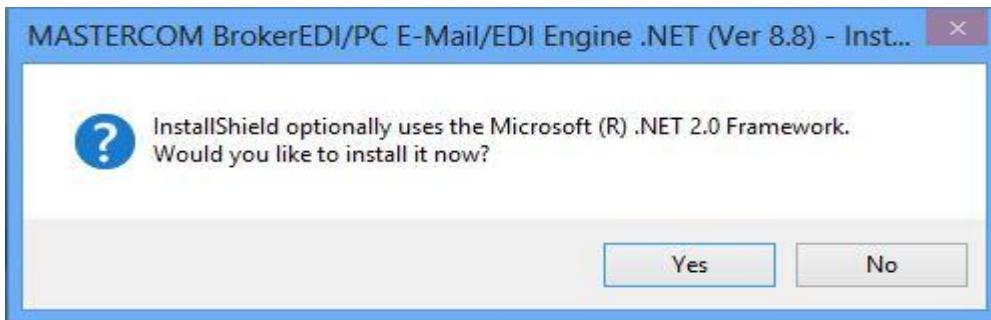


- 3) Move **setup.exe** from your **\Downloads** folder to the Power Broker mapped drive where the folder \BRO resides, as illustrated below. In this case the mapped drive is R.



- 4) Double-click **setup.exe** to start the installation. If you get:

Fast Install Steps

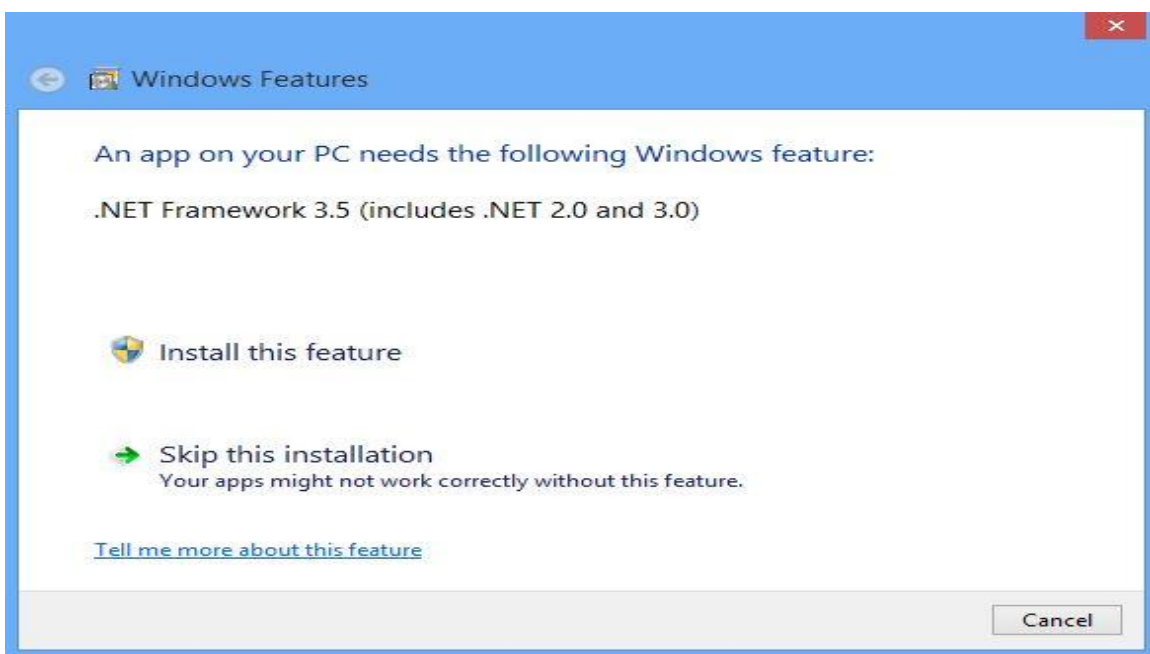


Click the **Yes** button to install the .NET 2.0 Framework.



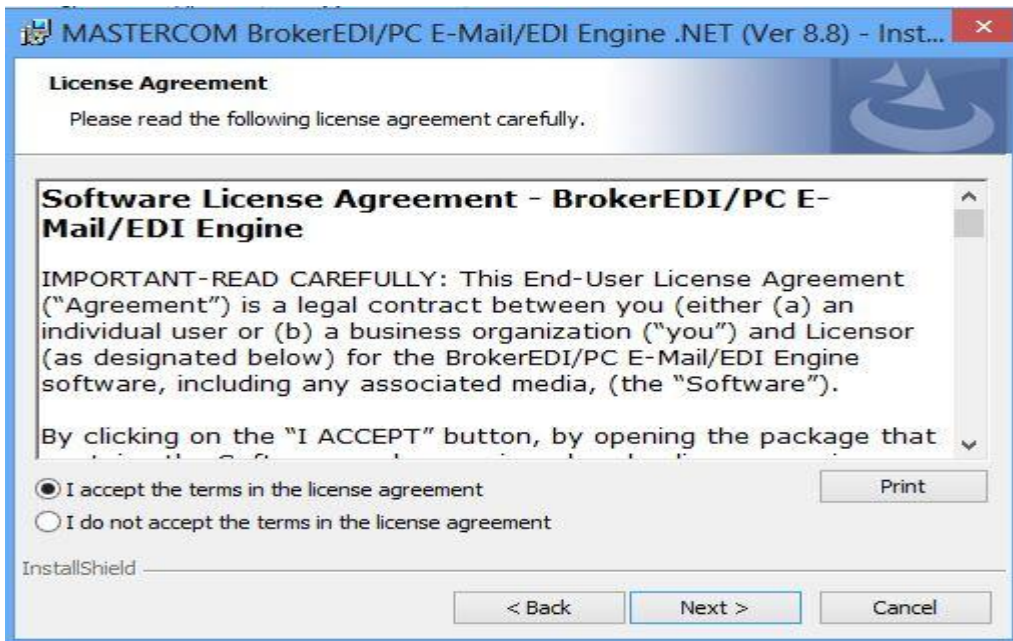
Click the **Run** button to install the .NET 2.0 Framework.

If you may get the following dialog, click **“Install this feature”** as shown below.



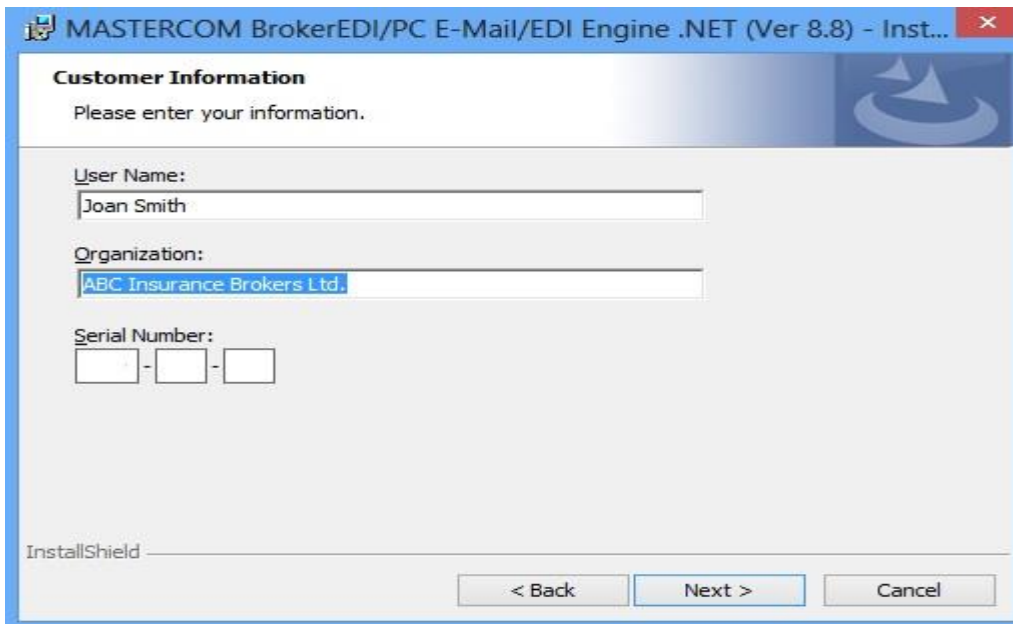
Fast Install Steps

5) License Agreement



After reading and agreeing to the license agreement, select **I accept ...** and the **Next** button.

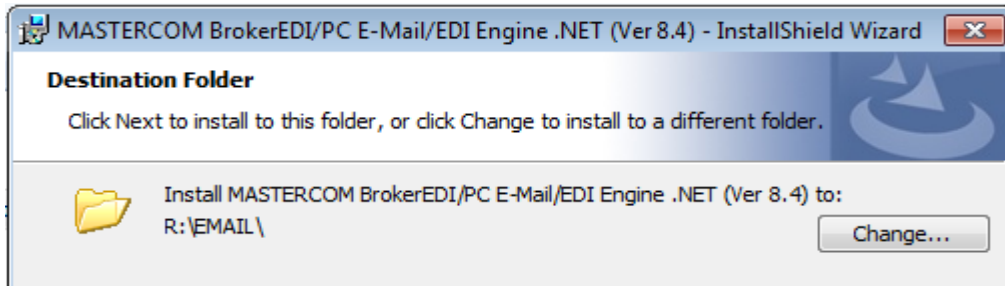
6) **Customer Information** - For a **User Name** specify the name of the user for the PC, for **Organization** specify the brokerage name and for **Serial Number** your MASTERCOM product id.



Click the **Next** button to continue.

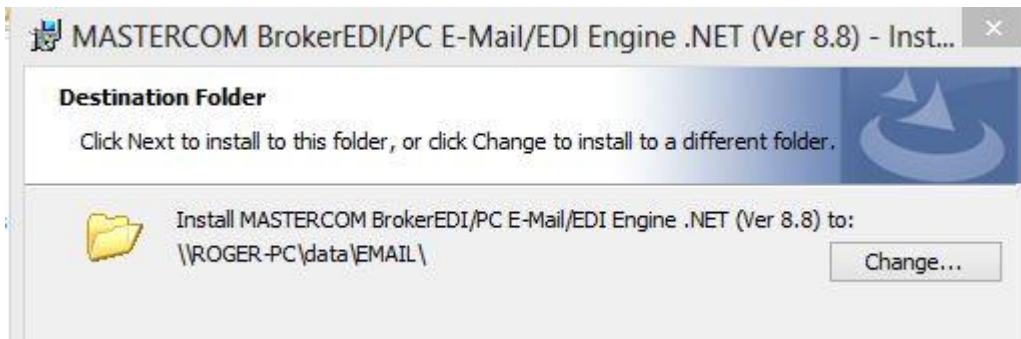
Fast Install Steps

7) The **Destination Folder** should show that you are installing the software in the \EMAIL older on the mapped drive e.g. **R:** where the \BRO folder is located.



If the **Destination Folder** shows a UNC path e.g. [\\ROGER-PC\data\EMAIL](#), as illustrated below, stop the installation and run setup.exe from a mapped drive where the \BRO folder is located. If installed from a UNC path you will get the error:

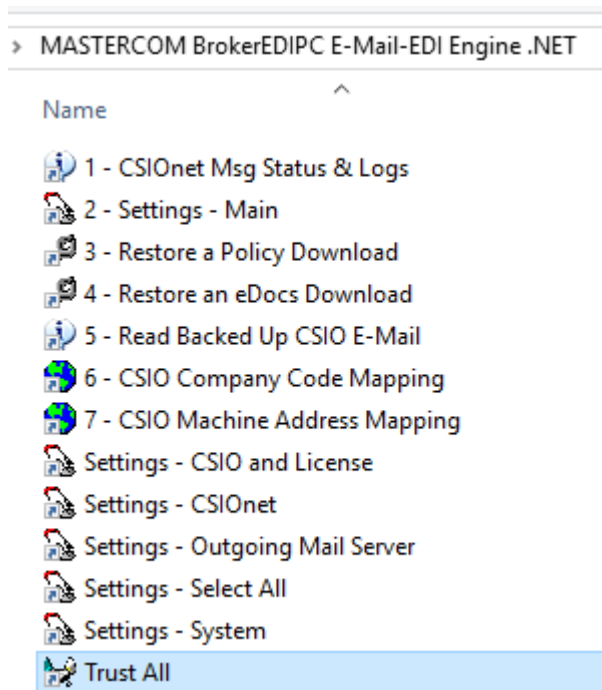
```
CMD does not support UNC paths as current directories.  
The system cannot find the path specified.
```



You can, however, click the **Change** button and change to installing in e.g. **R:\EMAIL** or stop the installation and run setup.exe from a mapped drive where the \BRO folder is located.

Fast Install Steps

When the installation is finished, the following “**MASTERCOM BrokerEDIPC E-Mail-EDI Engine .NET**” program folder is created.



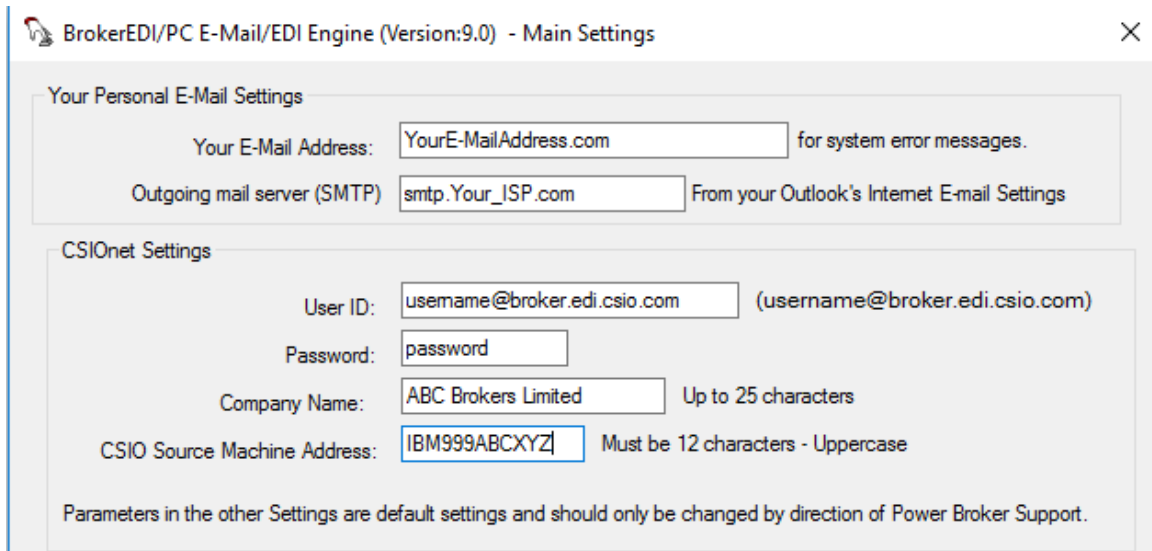
- 8) Click **Start, All Programs**, and in the “**MASTERCOM BrokerEDIPC E-Mail-EDI Engine .NET**” program folder, right click the “**Trust All**” program-item and “**Run as administrator**” to modify your security policy to trust the mapped \EMAIL folder. At the prompt type “y” <Enter>. You should see the following command window, indicating “**Success**”, as shown below.

```
C:\WINDOWS\system32>echo off
Microsoft (R) .NET Framework CasPol 2.0.50727.4927
Copyright (c) Microsoft Corporation. All rights reserved.

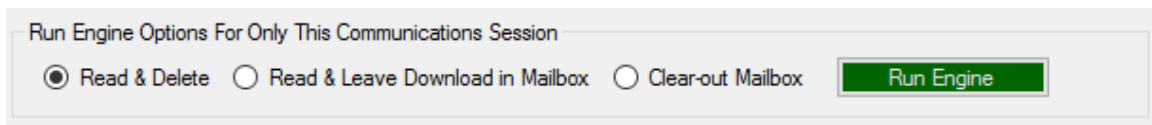
The operation you are performing will alter security policy.
Are you sure you want to perform this operation? (yes/no)
y
Added union code group with "-url" membership condition to the Machine level.
Success
Press any key to continue . . .
```

Fast Install Steps

- 9) In the “**MASTERCOM BrokerEDIPC E-Mail-EDI Engine .NET**” program folder select the “**2- Settings – Main**” program item.



- 1) Replace **YourE-MailAddress.com** with your open internet e-mail address you use everyday.
- 2) Replace **smtp.Your ISP.com** with your ISP’s Outgoing mail server (SMTP) which you would find specified in your e-mail client e.g. Microsoft Outlook. If you have a Microsoft Exchange Server you would specify the IP address, of the PC that is hosting the Exchange Server.
- 3) Specify your CSIONet username plus **@broker.edi.csio.com**, password and CSIO Source machine address etc. You would have received these values from CSIO when you subscribed to CSIONet.
- 4) You can change your company name (up to 25 characters) used to identify you in your e-mails to your insurance companies.
- 5) Select the **OK** button to save the settings.
- 6) For your Firewall/Antivirus Software: Give wsGetDWNLD.exe, located in \EMAIL\EXE, rights to ports 25 and 110 and not scan incoming and outgoing e-mail. If your antivirus software does not permit you to be selective regarding certain programs then disable the antivirus software for the duration of the upload/download session.
- 7) The “Settings – Main” has the options of “Read & Leave Download in Mailbox” and “Clear Out Mailbox. Please see below.

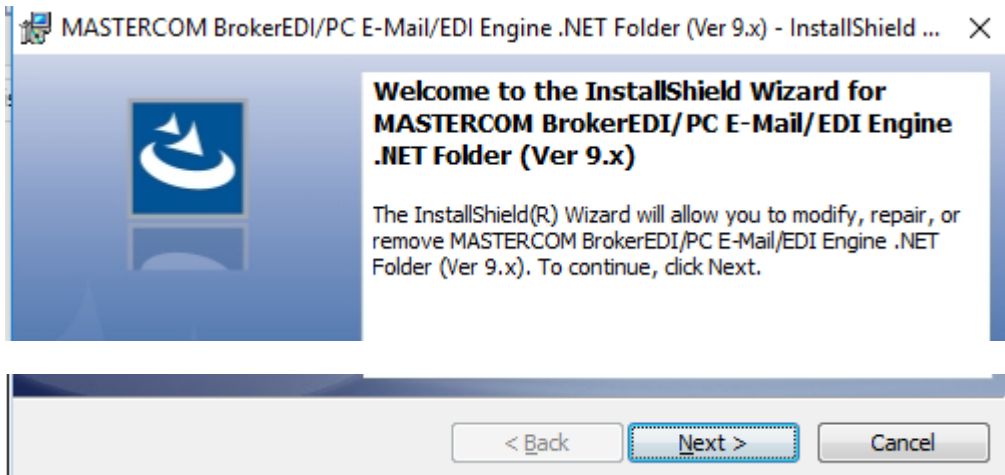


Fast Install Steps

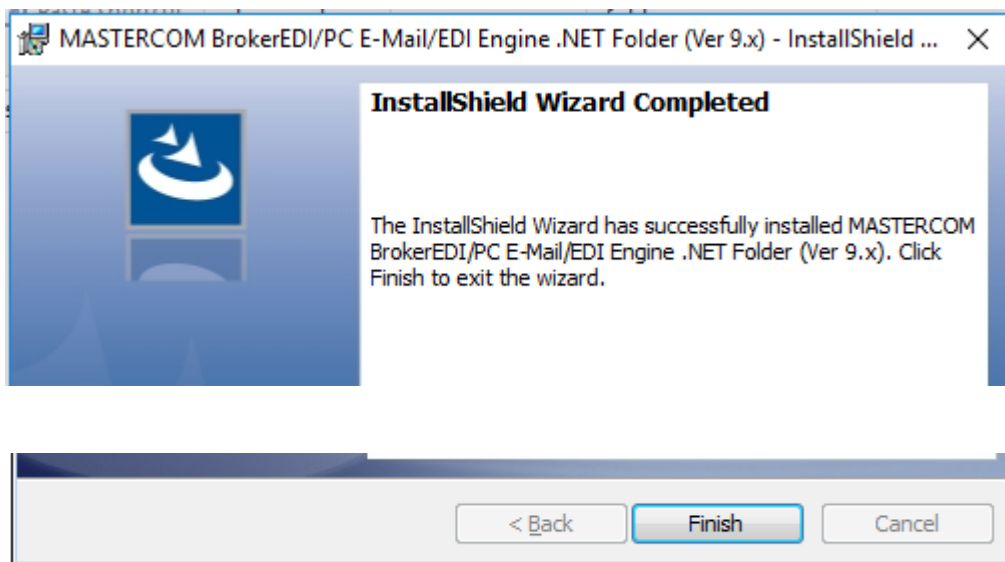
Install the **BrokerEDIPC E-Mail-EDI Engine .NET** program folder

To setup another PC in the office to do the upload/download communications, explore to the \EMAIL folder and run **setuppc.exe**.

1) At a PC explore to the \EMAIL directory and double-click **Setuppc.exe** to start the installation, as shown below. Setuppc.exe installs shortcuts to programs in the \EMAIL folder on the server.



Click the **Next >** button to continue.



Click the **Finish** button to finish the installation.

2) Reboot the PC.

3) As in step 8 above, in the “**MASTERCOM BrokerEDIPC E-Mail-EDI Engine .NET**” program folder right click the “**Trust All** “ program-item and “**Run as administrator**”.